

Attendance Quiz 5

Part 1

- 1) Once upon a time 3 ladies of the First People of Anisee sitting around the campfire
- lady 1 reindeer skin weighed 170 pounds
 - lady 2 buffalo skin weighed 160 pounds
 - lady 3 skin of hippo weighed 300 pounds

The square on the hippo is equal to the
sum of the squares on the other 2 sides

Part 2

1)
I)

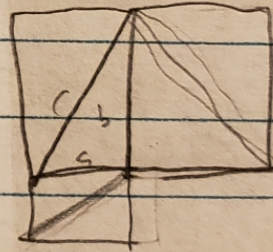
$$a^2 + b^2 = c^2$$

$$a \times a + b \times b = c^2$$

$$(a+b) \cdot (a+b)$$

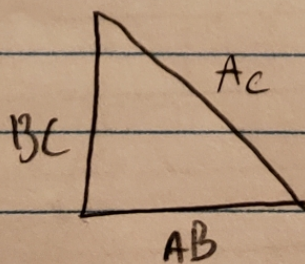
$$a^2 + ab + ab + b^2$$

$$a^2 + 2ab + b^2$$



II)

$$AC = b \quad BC = a \quad AB = c$$



$$BC^2 + AB^2 = AC^2$$

2) (3, 4, 5)

