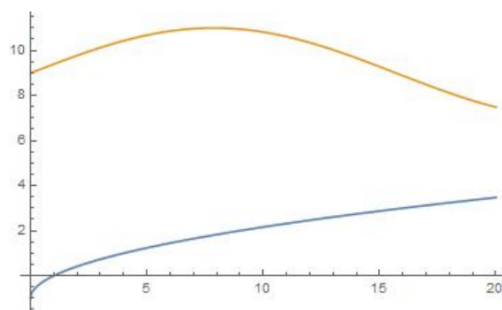


Students in a Calculus class are given two functions, graphed in the image below.



The students were asked to find the area between the curves on $[5, 10]$. Their answers are below:

- Student A: 25
- Student B: 100
- Student C: 75
- Student D: -75

Only one student got the problem correct. Which student got it correct? What mistake did each of the other students likely make? Justify your claims.