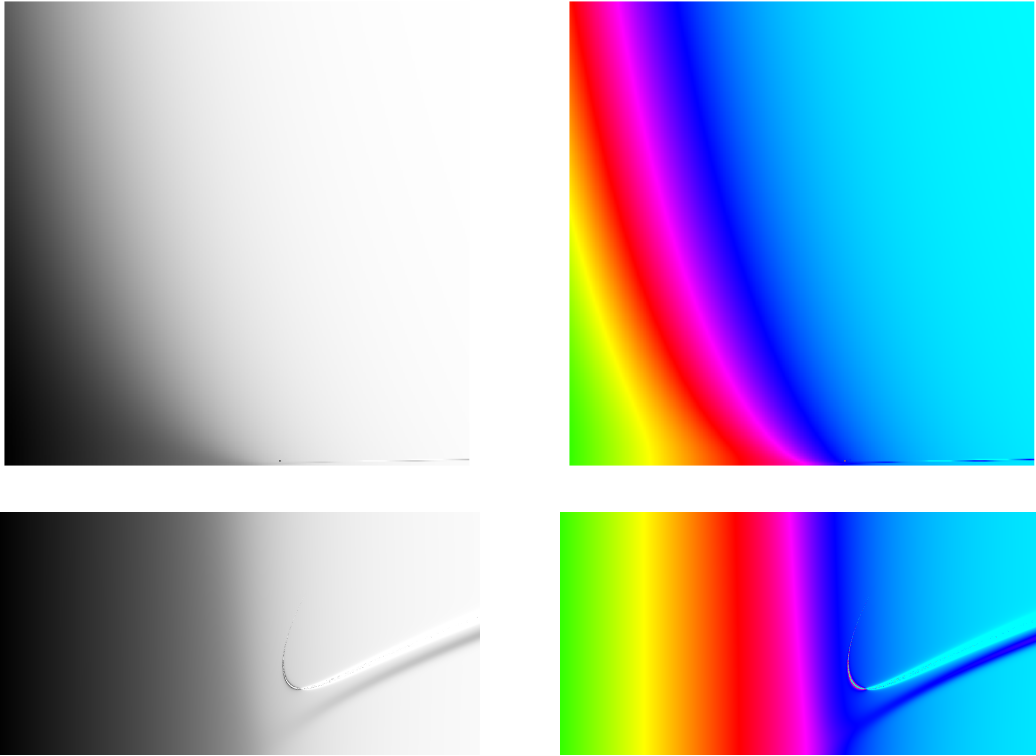


In the following pictures, the temperature parameter  $x = \exp(\nu)$  ranges horizontally from 1 (left) to 2 (right) and the field parameter  $y = \exp(H)$  ranges vertically from 1 (bottom) to 2 (top) in the first row and from 1 (bottom) to 1.02 (top) in the second row.

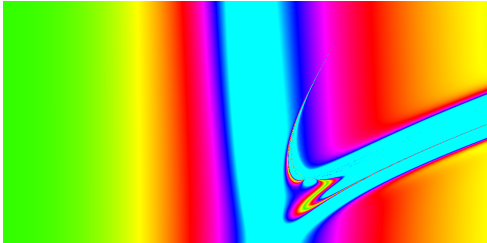
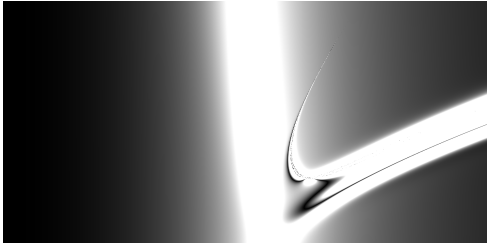
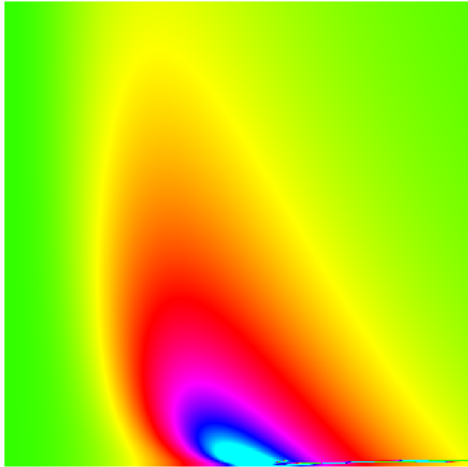
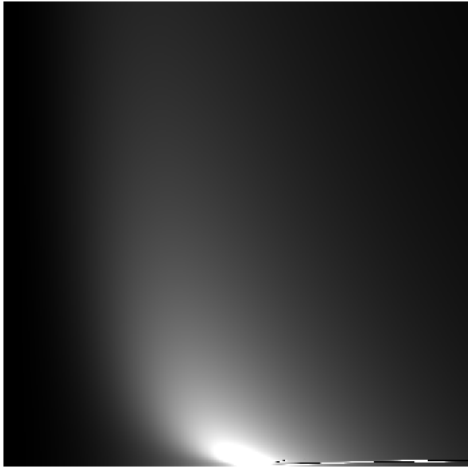
## Internal Energy

Values range from 0 (black/green) to  $\geq 2$  (white/cyan)



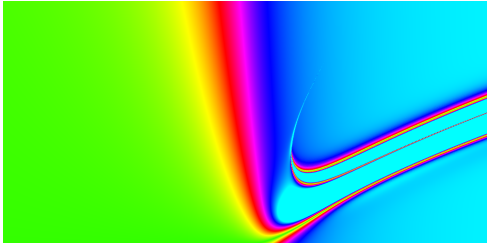
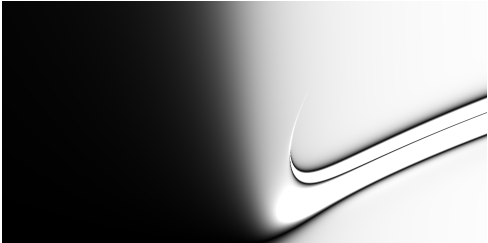
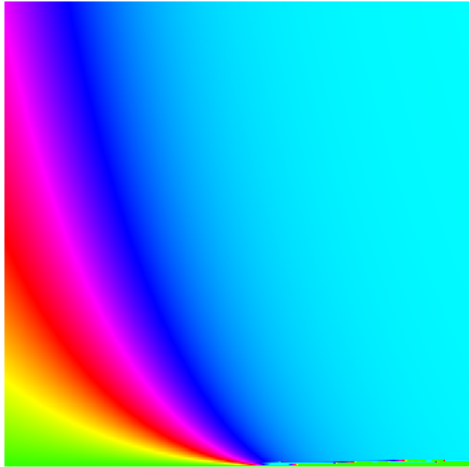
# Specific Heat

Values range from 0 (black/green) to  $\geq 1$  (white/cyan)



# Magnetization

Values range from 0 (black/green) to  $\geq 1$  (white/cyan)



# Susceptibility

Values range from 0 (black/green) to  $\geq 2$  (white/cyan)

